

# **I&S Town Hall**

**June 30, 2022**

# Zoom Guidance

- Attendees please use the Q&A section.
- Any questions not answered during the Town Hall will be reviewed and answered by the appropriate party afterward via email. Please supply your name to any questions.
- The town hall is being recorded and will be shared out to the unit, as well as posted to the website.



# **I&S Strategic Plan**

# Strategic Plan Steering Committee Members

- Theophilis Batiste, Building Services Inspector
- Laurence Brennan, Planning, Design and Construction Program Support Coordinator
- Jeff Bridges, A/C Mechanic III
- Cathy Brim, Communications Officer II
- Maria Del Mar Ceballos, Building Information Modeling Manager/Virtual D&C
- Federico del Risco, Utilities Engineer II
- Pat Ficenic, IT Support Professional Senior
- Larry Goodman, Building Coordinator I
- Kevin Marks, Multicraft Foreperson
- Alex Ortiz, Interim Assoc. Vice President Sustainability
- Ovida Reeves, Business Analyst I
- Doug Sims, Systems Support Engineer Senior
- Stanley Smith, Building Services Program Support Manager
- Samantha Voorhees, Financial Analyst II
- Alicia Wood-Jones, Lab & Chemical Safety Officer
- Nazia Zakir, Senior Associate Vice President, Strategy and Compliance



## I&S Mission Statement

- **Infrastructure and Sustainability sets the standard for how to deliver an environment that is safe, sustainable, resilient, and innovative for the *entire campus community*.**



## **I&S Vision Statement**

- **Infrastructure and Sustainability will ignite and champion the global community toward a sustainable and resilient future through the empowerment of people and stewardship of resources.**

# Cultivate Wellbeing

Focus	Goal	Objective
Operations	Prioritize the demonstration of and leadership's commitment and collaboration to promote an inclusive culture.	<ul style="list-style-type: none"><li>❖ Be intentional in the ongoing development of employee success and learning opportunities.</li><li>❖ Celebrate examples of resiliency, exceptional service, and collaboration across units.</li><li>❖ Create tangible avenues for staff to share insights on successes, best practices and areas of improvements across all levels.</li></ul>

# Cultivate Wellbeing

Focus	Goal	Objective
Wellbeing	Promote a positive, engaging and resilient environment to foster wellbeing.	<ul style="list-style-type: none"><li>❖ Educate the I&amp;S community about the available resources, training, and team-building activities that contribute to a synergistic culture.</li><li>❖ Administer a quarterly review of employee feedback to assess the effectiveness of resources.</li><li>❖ Develop additional resources, programs, and opportunities for our diverse workforce to engage in campus-supported activities.</li></ul>



# Cultivate Wellbeing

Focus	Goal	Objective
Safety	Provide healthy and safe working conditions to protect and support all members of I&S.	<ul style="list-style-type: none"><li>❖ Communicate effectively any changes to processes and procedures regarding safety training.</li><li>❖ Standardize safety training.</li></ul>

# Champion Innovation

Focus	Goal	Objective
Students	Engage subject matter experts to empower student innovation.	<ul style="list-style-type: none"><li>❖ Promote throughout the I&amp;S unit and the campus community that Georgia Tech is a living, learning laboratory that engages with students and researchers.</li><li>❖ Invest in spaces that inform a sustainable, resilient lifestyle.</li></ul>
Sustainability	Advance sustainable practices to promote resiliency and environmental preservation.	<ul style="list-style-type: none"><li>❖ Advocate for zero waste and carbon neutrality initiatives to expedite the achievement of stated Institute goals.</li><li>❖ Promote sustainable utility usage across campus.</li></ul>

# Champion Innovation

Focus	Goal	Objective
Operations	Modernize our business strategies and processes to increase efficiency, reduce redundancy, and improve efficacy.	<ul style="list-style-type: none"><li>❖ Inventory and assess current processes to evaluate inefficiencies.</li><li>❖ Provide an avenue for innovative ideas to be presented and evaluated for implementation.</li><li>❖ Develop an implementation strategy to streamline the integration of identified processes.</li></ul>

# Champion Innovation

Focus	Goal	Objective
Technology	Develop innovative solutions and leverage cutting-edge technologies to optimize resources and operational practices.	❖ Collaborate across I&S areas to identify opportunities for technological advancements that will improve working conditions.

# Amplify Impact

Focus	Goal	Objective
Learning	Leverage the campus community and environment to broadly share a network of experiences and expertise.	<ul style="list-style-type: none"><li>❖ Shepherd the integration of sustainability in curriculum, experiential learning and research.</li><li>❖ Promote meaningful contributions from all units of I&amp;S to the Living Learning Campus.</li></ul>

# Amplify Impact

Focus	Goal	Objective
Values	Advance sustainability, resiliency, and equity to create transformative cultural impact.	<ul style="list-style-type: none"><li>❖ Engage with community partners to program and plan newly acquired real estate that centers values of equity, sustainability and innovation.</li><li>❖ Celebrate and increase visibility of successful initiatives.</li><li>❖ Provide visibility on how and why we create sustainable ecosystems and education around their impact and value.</li></ul>



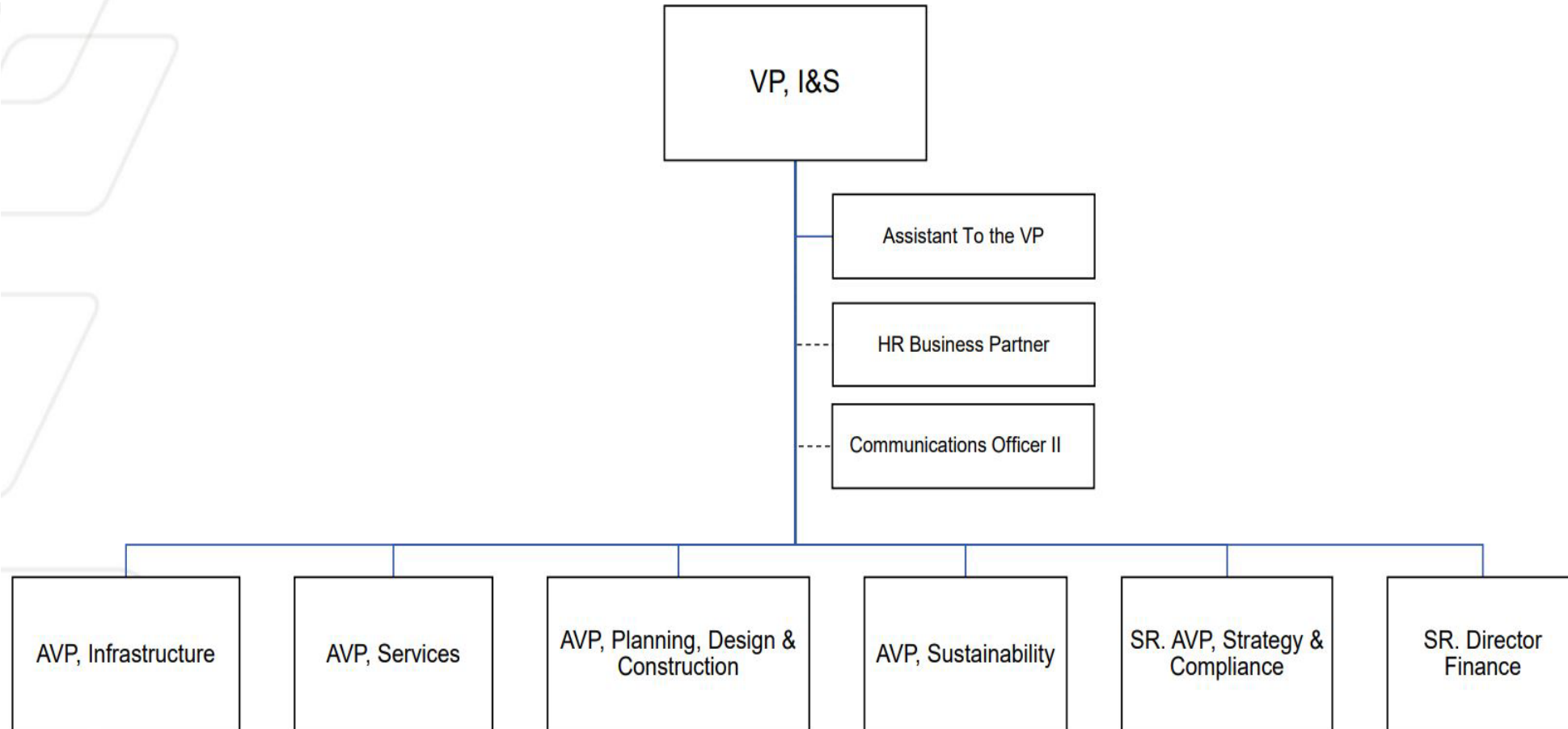
# Amplify Impact

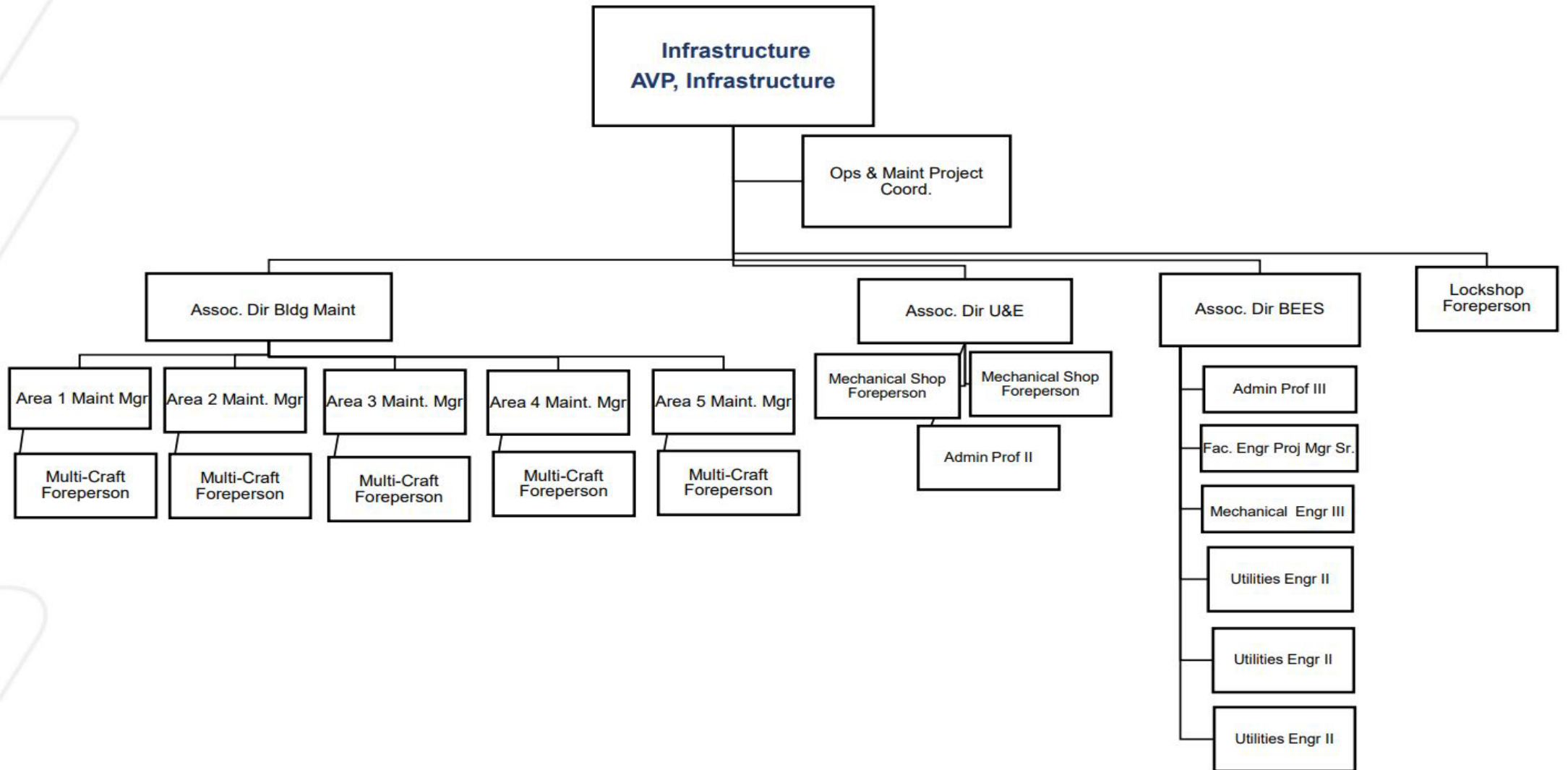
Focus	Goal	Objective
Technology	Exemplify the value of technology in the service of informing positive human impact and the protection of the environment.	<ul style="list-style-type: none"><li>❖ Understand, standardize and prioritize equitable access to data.</li><li>❖ Capture the triple bottom line "people, planet, profit" in decision-making processes.</li></ul>

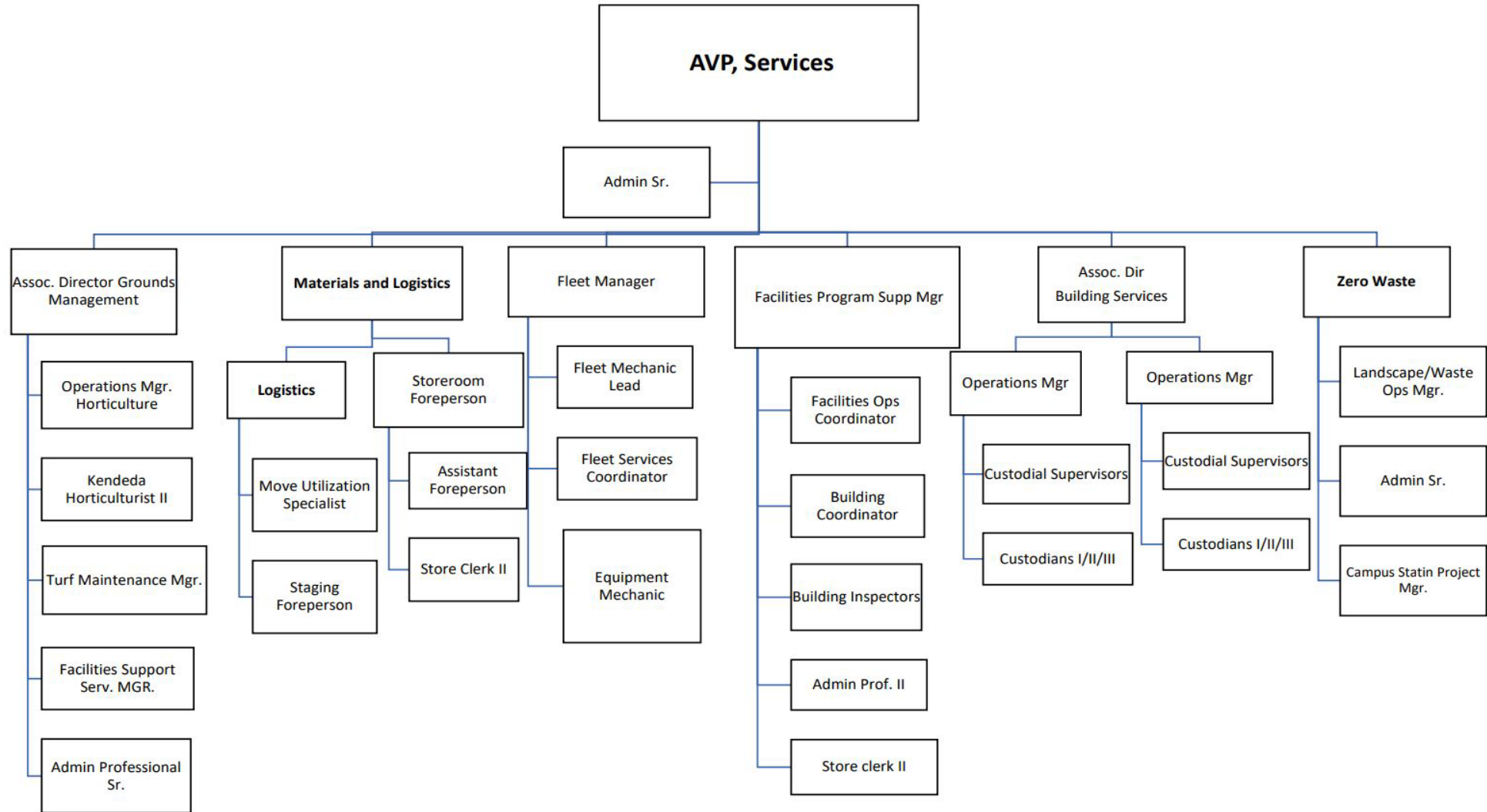
# Q&A

# **I&S Update on Reorganization**

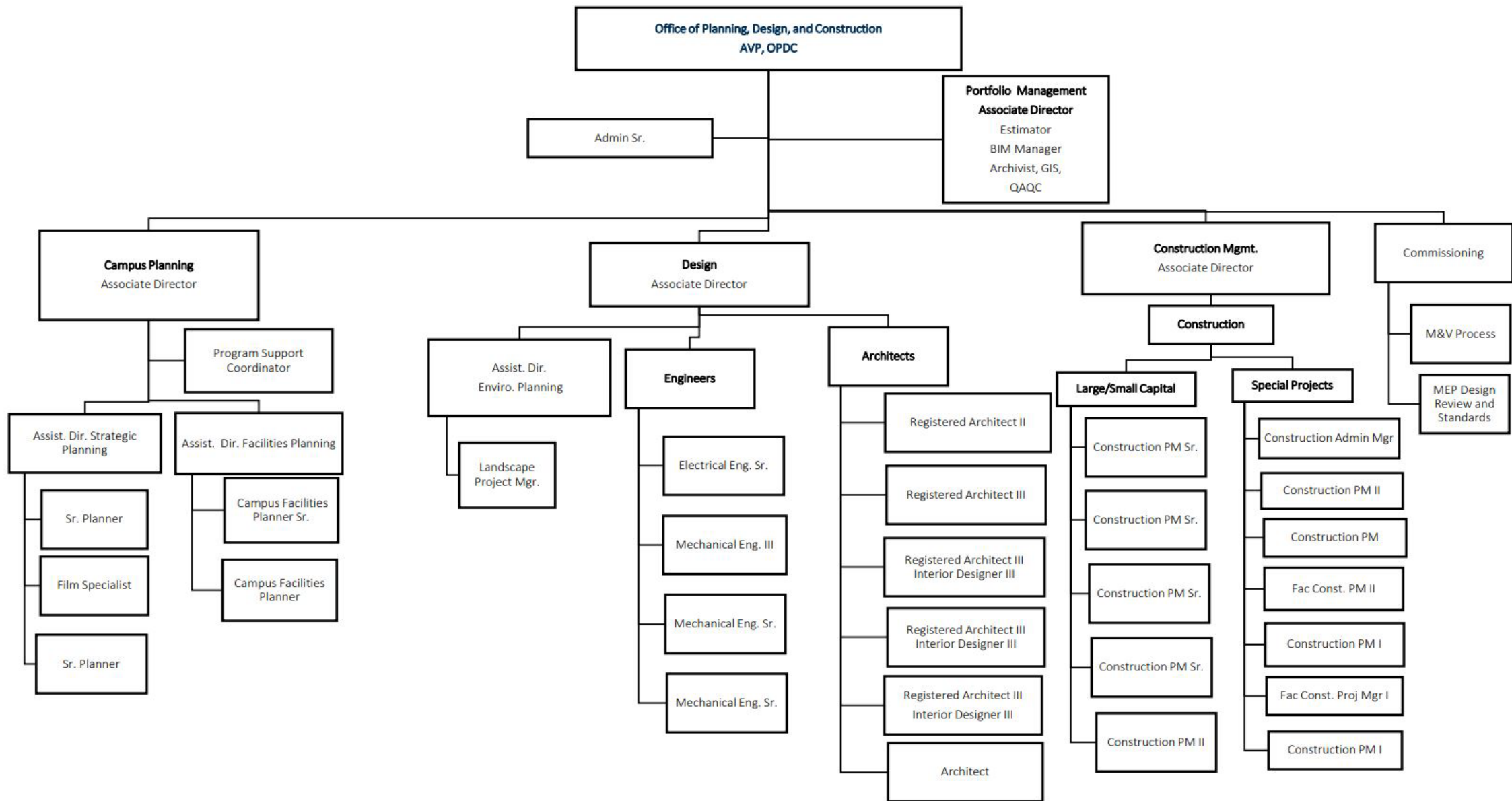
# Organizational Charts

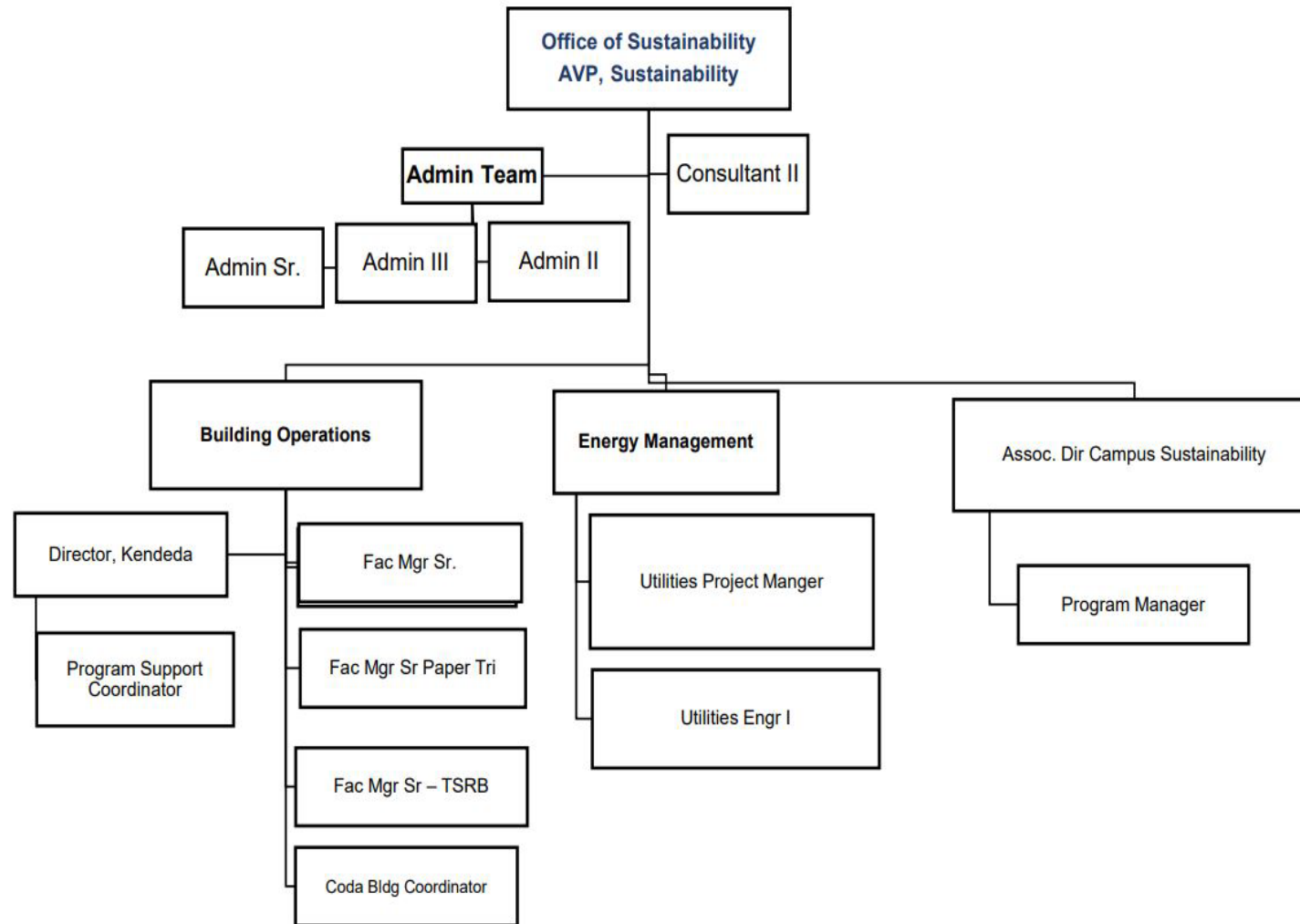


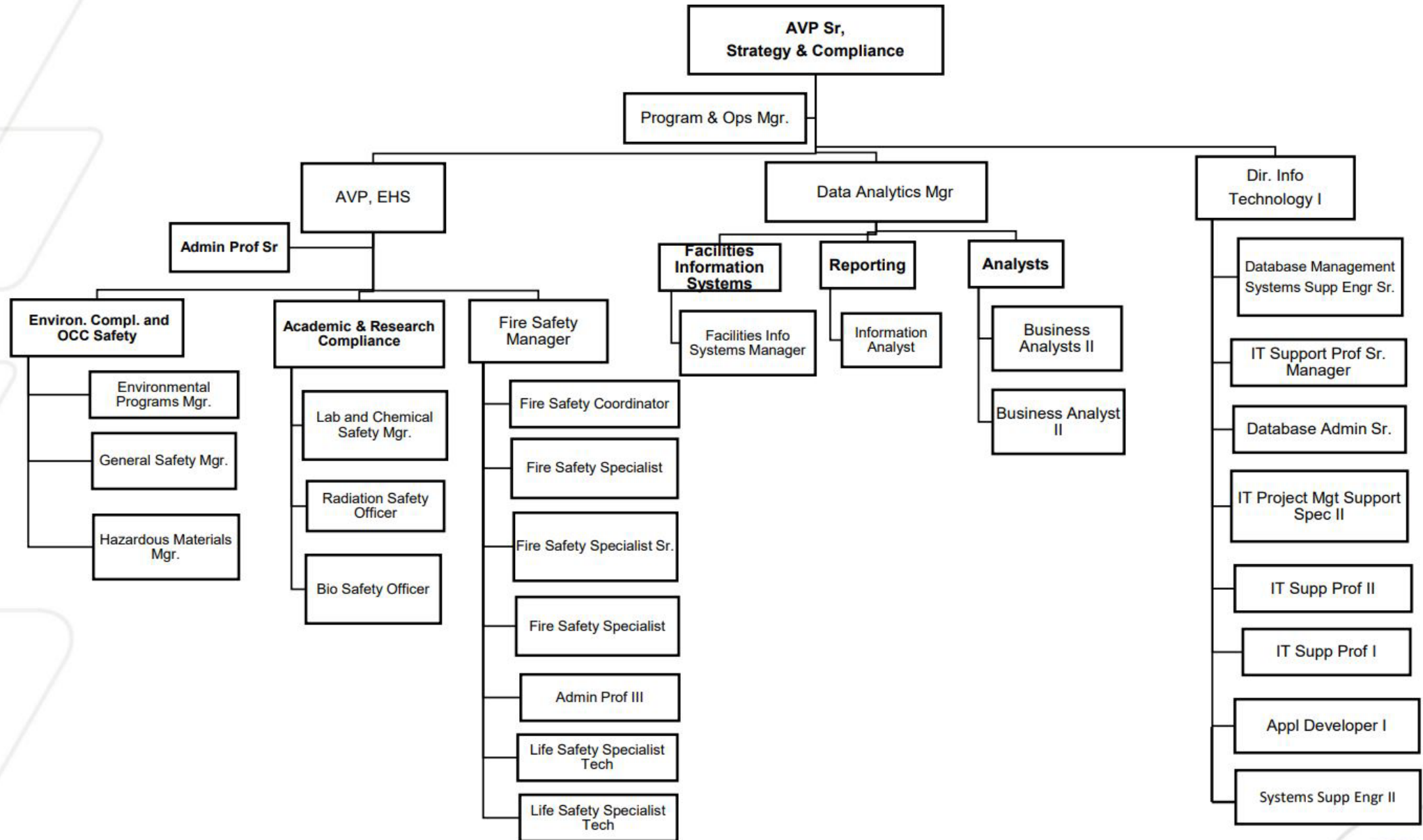


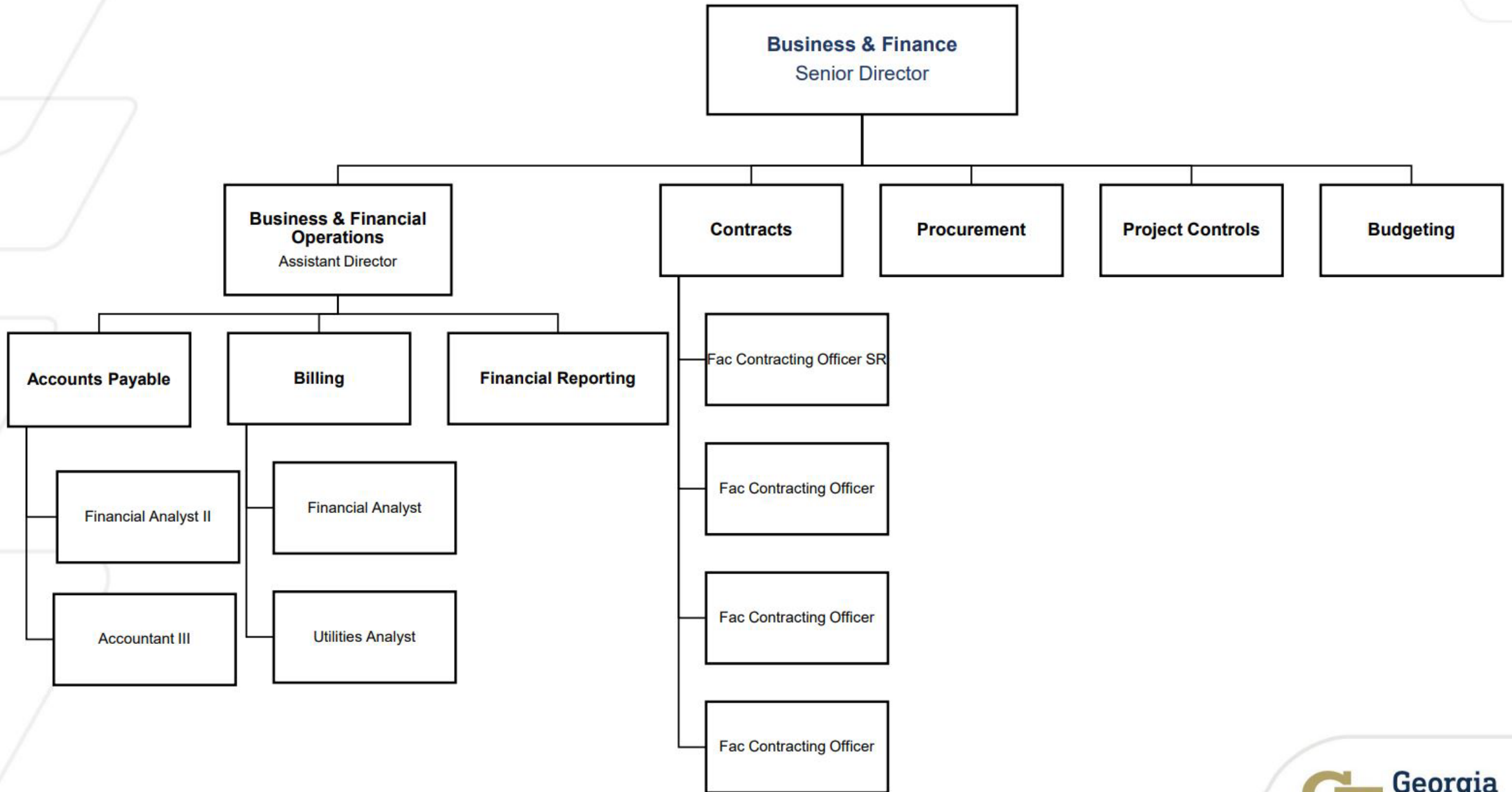












# Q&A