

Georgia Institute of Technology

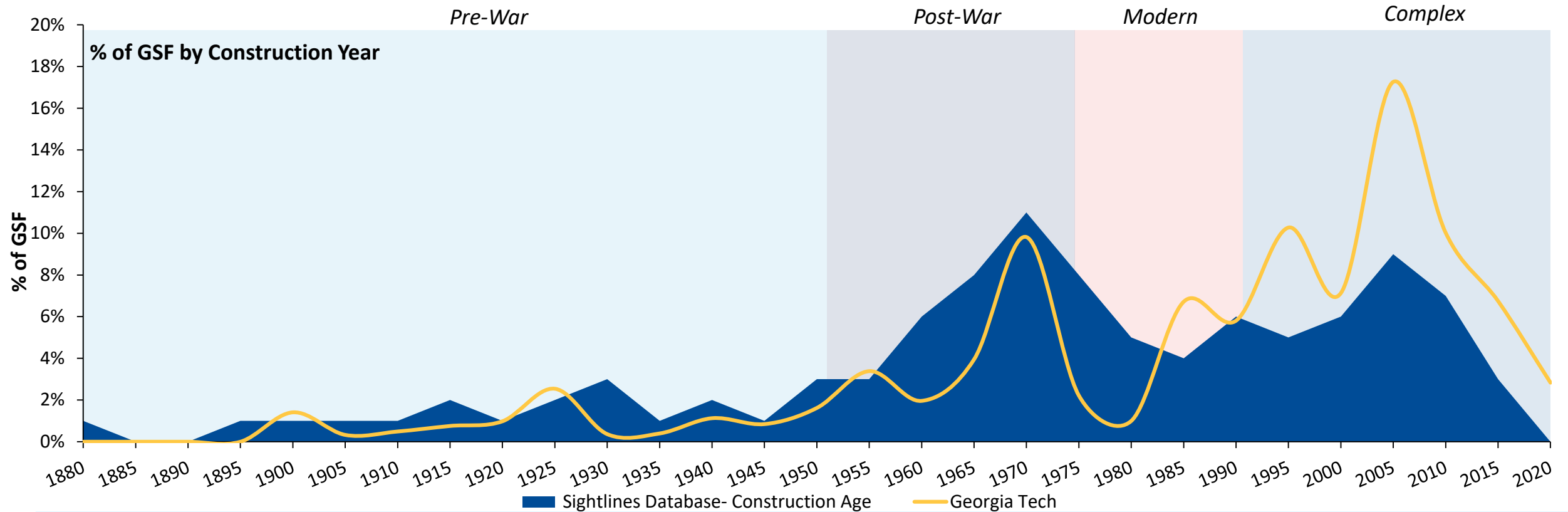
FY18 Facilities Benchmarking and Analysis Presentation

January 2019

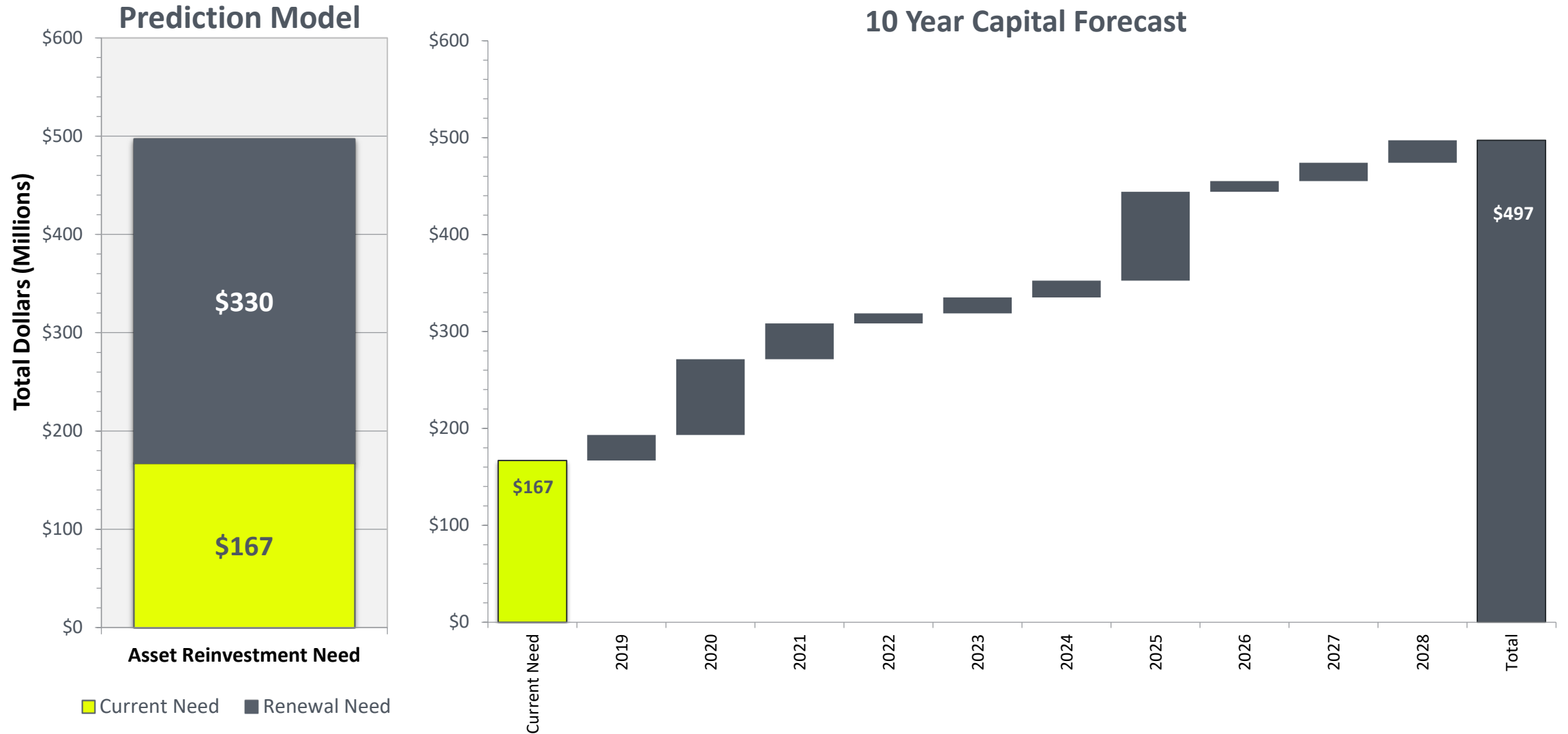


Putting Our Campus Building Age in Context

The campus age drives the overall risk profile



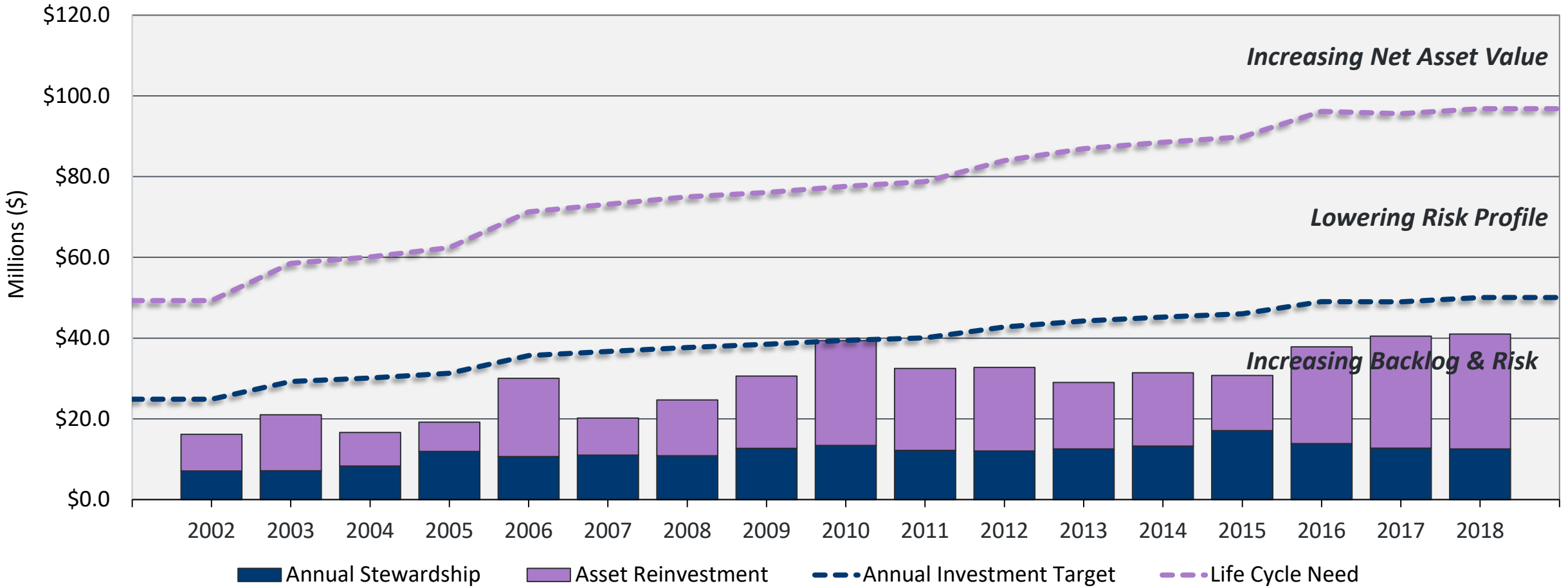
ROPA+ Prediction: Looking at 10 Year Need



Current Investment Not Reaching Target Levels

Georgia Tech masking deferral through PM program, age of space

Total Capital Investment vs. Funding Target

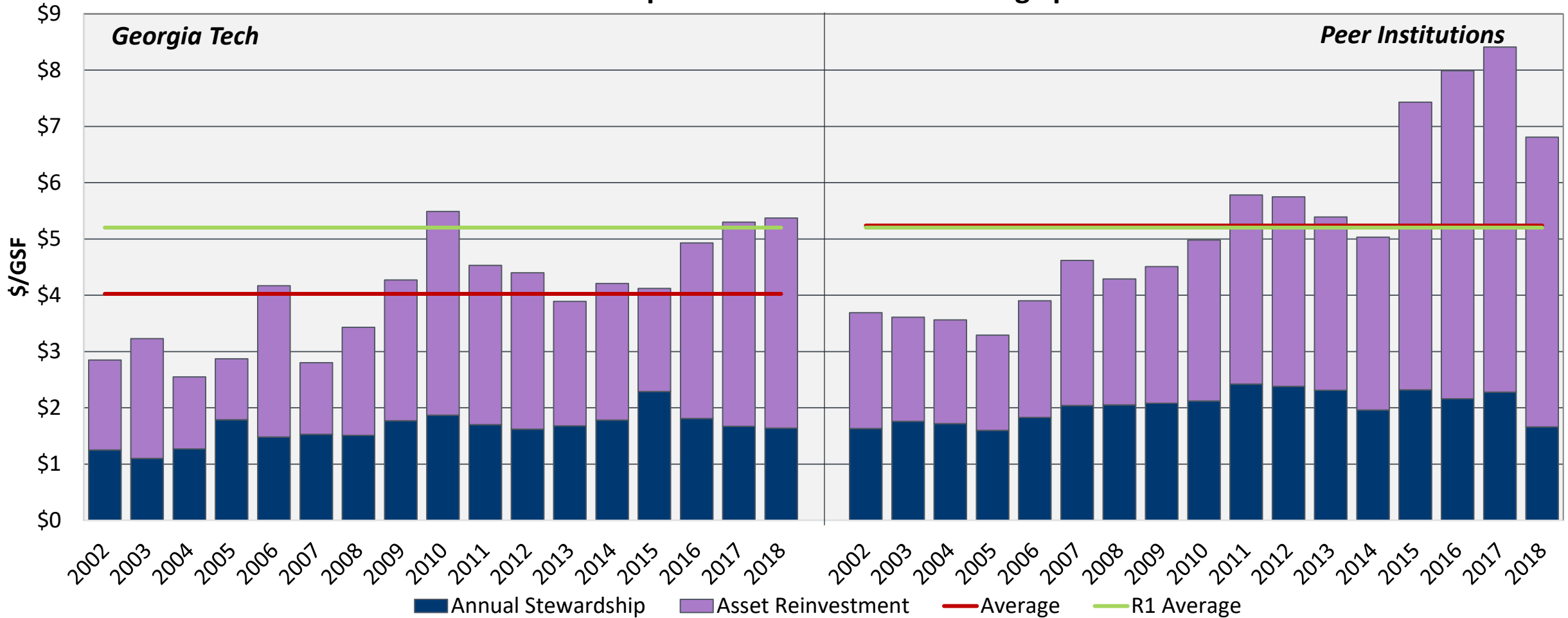


*Spending does not include new space, non-facilities, or infrastructure

Peers Spending Above Georgia Tech

Recent one time influx of capital has allowed Georgia Tech to match peer average

Total Capital Investment into Existing Space

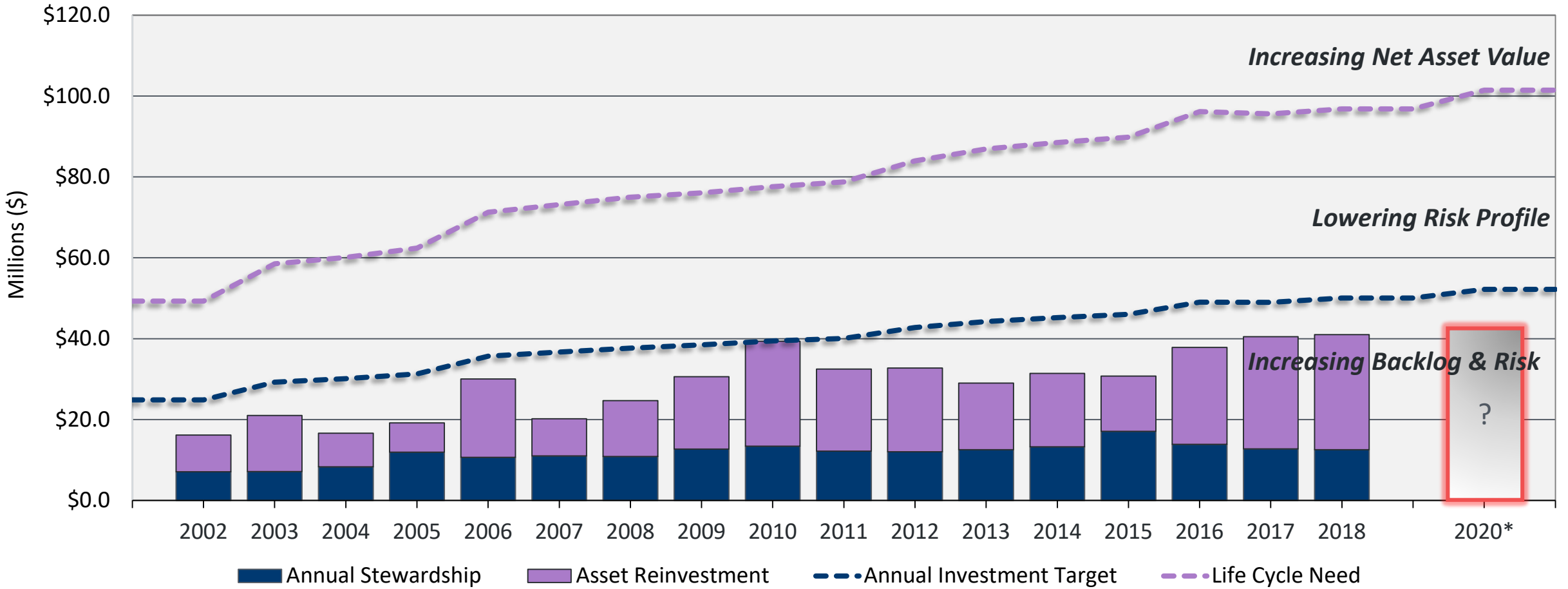


*Spending does not include new space, non-facilities, or infrastructure

Projection of Targets Shows Increased Deferral

Georgia Tech masking deferral through PM program, age of space

Total Capital Investment vs. Funding Target



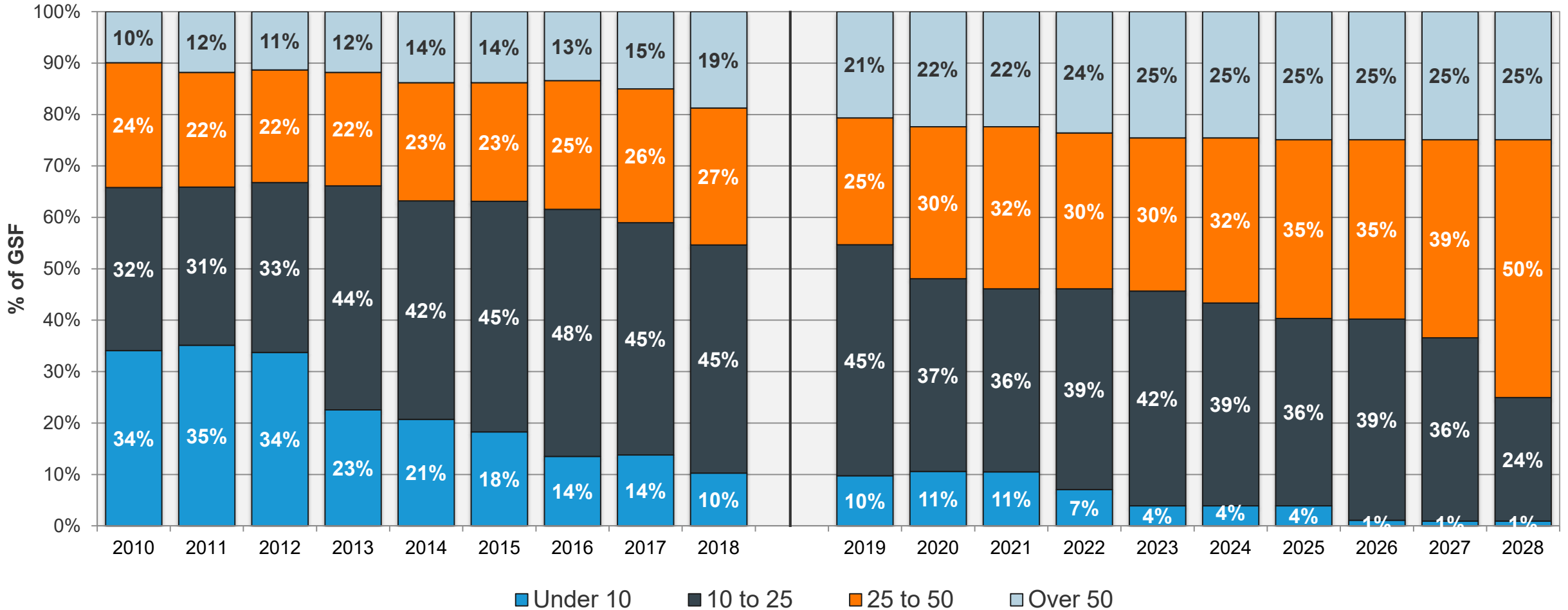
Spending does not include new space, non-facilities, or infrastructure

*2020 includes Living Building and Campus Safety Facility

GIT's Competitive Advantage Shifts in Near Future

Future campus profile makes management of age profile difficult

Renovation Age by Category



*2020 includes Living Building and Campus Safety Facility